

## Your partner for international **project logistics**

---

We combine the know-how of four experienced companies – CONTRANS Logistik GmbH, PIEPER Schwerlast GmbH, CONPACK GmbH and CONTRANS Logistics Antwerp BVBA to provide you with an optimal range of services for the organization and realization of your logistical requirements.

One-stop worldwide project logistics

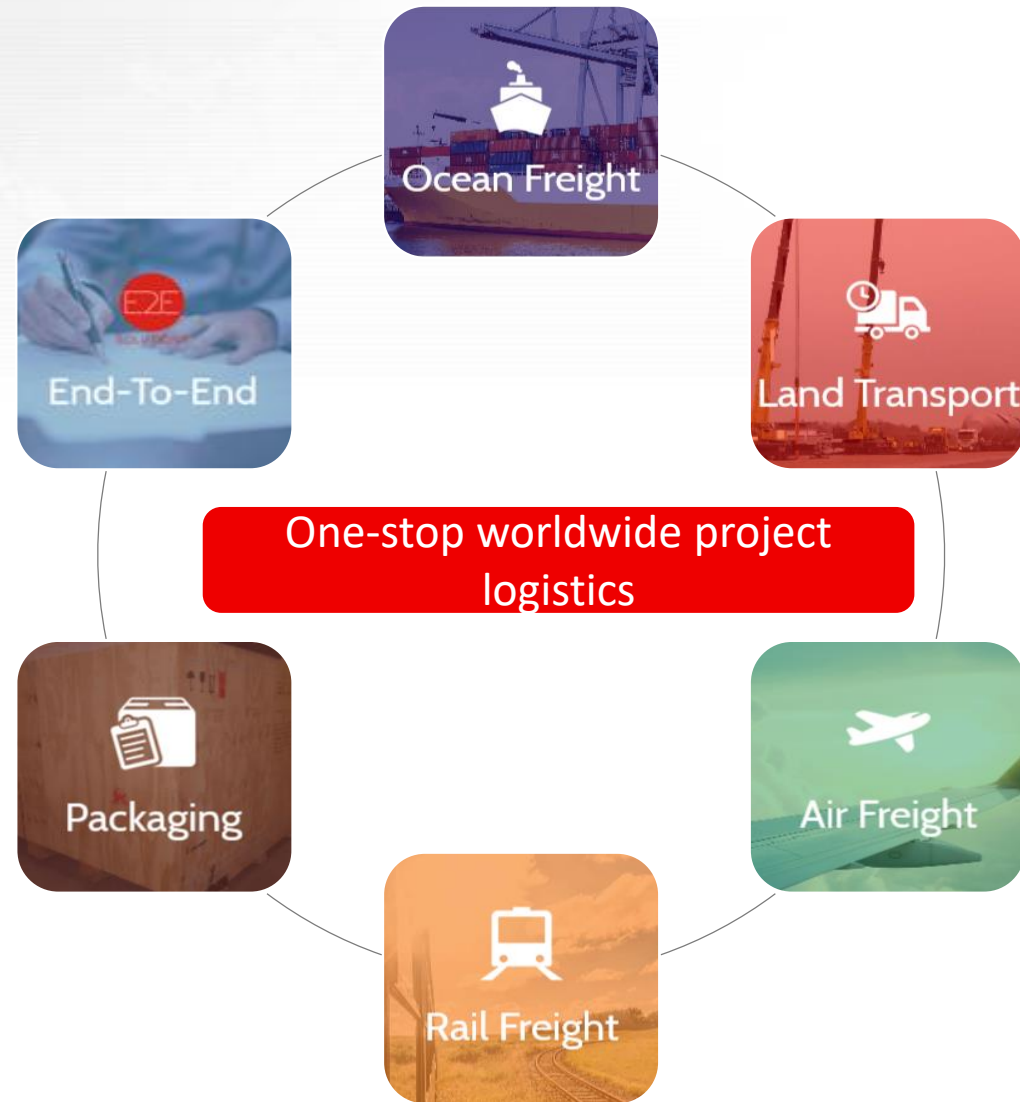
Our locations in Dortmund, Bochum, Bremen, Antwerp and Bangkok guarantee you all alternatives!

# Business References



We are grateful for many years of cooperation and trust in CAS Group!

# Our range of services





# One-stop worldwide project logistics



- Delivering cargo on foundation
- Transport to building plant
- Sea transport to port of destination
- Transport to preferred port of loading
- Document management incl. issuing of packing lists, export customs documentation and import customs clearance, L/C documentation
- Container stuffing
- Seaworthy packaging
- Warehousing
- Route inspection and feasibility study for oversized transports and heavy haulage including crane positioning
- Loose parts project management
- Transport to a packing station and consolidation of different cargoes
- Supply chain management with multistage pre-carriage

# Our range of services

---



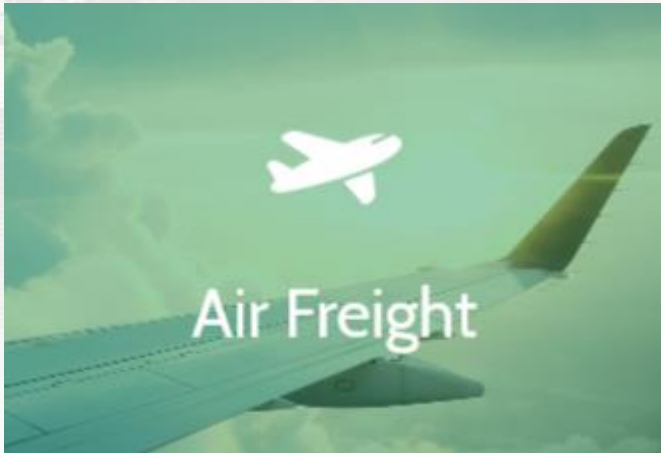
- By ocean vessel, barge, ponton or coaster
- For LCL consolidated cargo, FCL, Special Equipment, Break Bulk / RoRo and Charter - we stand by your side with our offices in Bremen, Antwerp and Dortmund
- Document management incl. export customs documentation and import customs clearance, L/C documentation
- Seaworthy packaging, securing und transport insurance



- Standard transports for general cargo, part and full load trucks, multimodal transport, containerized and oversized loadings / heavy haulage to national and international destinations
- Customs clearance , assembling of heavy parts , issuing road permits, transport and feasibility studies
- Experienced und multilingual Project Team

# Our range of services

---



- Air freight via Priority, Standard, full / part / and special Air Charter for Break Bulk parts
- Document management incl. export customs documentation and import customs clearance, L/C documentation
- Air worthy packaging, securing und transport insurance
- Door-to-Door full service
- Antonov or standard aircraft... everything is possible!



- Regularly railway and special railway transports
- Europe to Asia, North and South America
- Faster than sea freight and at a lower price than air freight
- Besides single wagon and whole train we can also offer Break Bulk, oversized and heavy duty transport by railway service

# Our range of services

---



- Industrial and export packaging according to multiple guidelines like HPE/IPPC15/ISPM15 and VCA, conservation, temporary storage, picking and loose parts systems
- Sea and air worthy packaging at our own warehouse, at shippers premises, Port of Loading or at suppliers warehouse with our own CAS specialists
- Container stuffing and mobile packaging team
- Packaging in China/USA/Australia according to HPE guidelines
- Our offices in Bremen und Antwerp have long term agreements and contracts for packaging and stevedoreing at many european seaports
- Contact us if you need additional storage space!



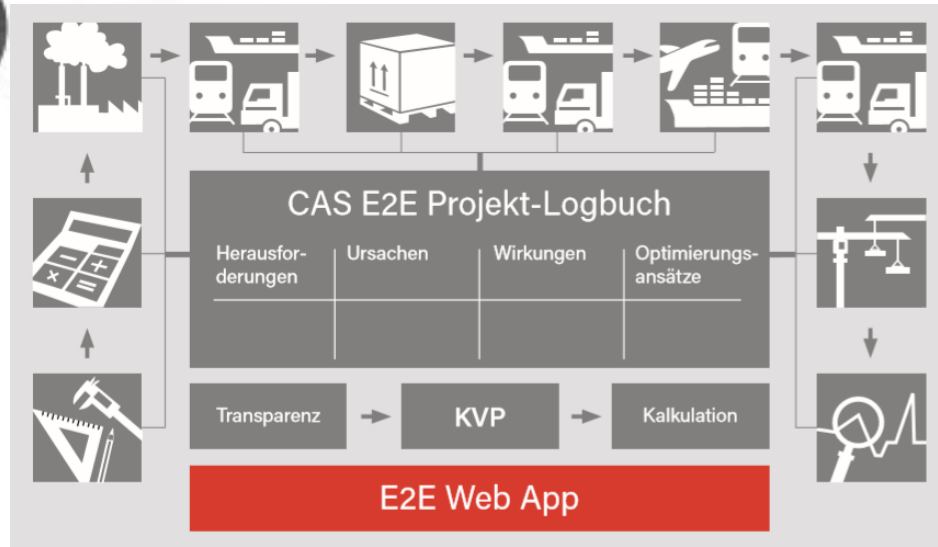


# Our range of services



## Integrated logistics management

Our **end-to-end** (E2E) planning, control and monitoring expertise provides our customers with a holistic optimization approach that assists you in the search for the best project-specific mix of costs, quality and time right from the project planning stage. Logistics from a single source, consultancy in tender management as well as own IT developments: CAS is your navigator for the **project logistics of the future**.





# Project example E2E „Baffinland“

---



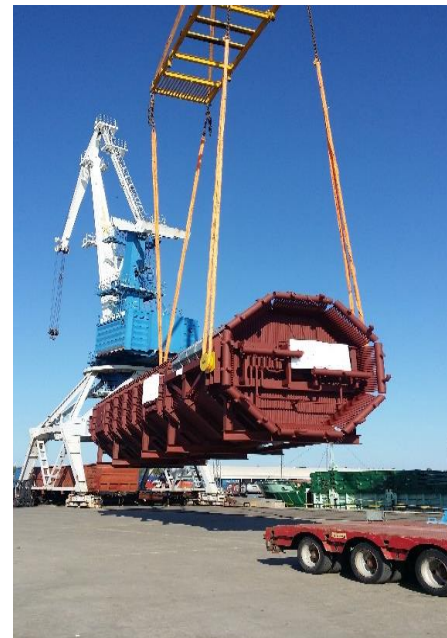


# Project example



## Raciborz, Poland → Kohtla-Järve, Estonia

Road and bridge survey for 2x boilers to Kohtla-Järve, Estonia. Transport via Opole, Poland and barge to Stettin. Transshipment in Stetting and sea transport to Paldiski, Estonia



Followed by transshipment and turnover on truck for transport to final destination in Kohtla-Järve, Estonia

Bolier upper part: 18,50 x 5,00 x 4,80 m – 52,5 to.

Bolier bottom: 21,00 x 4,85 x 4,80 m – 79,0 to.





# Project example

---





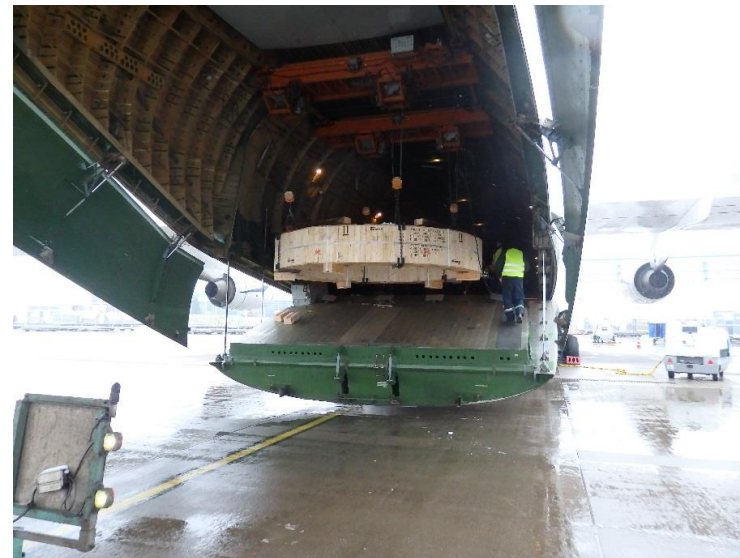
# Project example



Material: 1x barrel, 460 x 460 x 80 cm - 11,0 tons.

Scope of work:

- Air worthy packaging at shippers premises incl. Special design for air craft safety inspection
- Oversized transport to airport Cologne/Bonn (received road permit in one week)
- Airport handling including safety check and air craft loading/securing with our own CAS specialists
- Flight with Antonov AN124-100 to Edmonton, Canada
- Airport handling in Edmonton
- Oversized transport to final destination in Slave Lake, Canada





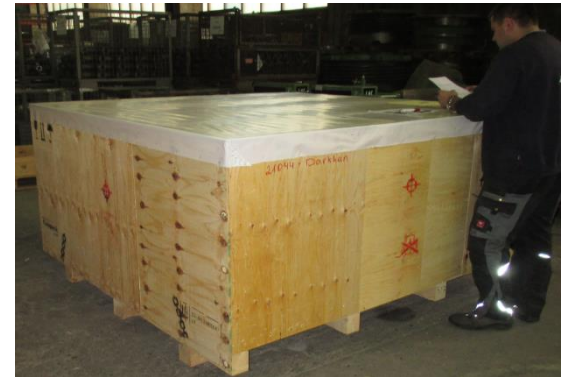
# Project example

---

Heavy load packaging  
of a compressor for sea  
transport to Asia



Packaging of a loose  
parts project for sea  
transport to China



Sea worthy packaging of a  
waste sorter for sea  
transport to USA





# Worldwide service for you...

---

We guarantee worldwide service for you due to our own branch offices, our Project Experts Network (P.E.N.) and our long term relationships to packaging facilities around the world.



**P.E.N.**   
PROJECT EXPERTS NETWORK

...because your logistic projects don't sleep!

---

We are always here for you – **24 hours a day / 7 days a week**

Our service support includes a **24 hours hotline:**



**+49 800 - 927 179 0**

In case of an emergency our CAS specialists hotline is available 24 hours a day. We know exactly what to do within a short time, to solve all issues in your supply chain as fast as possible. For each office there is an emergency concept through which you will get contact to our decision makers easily.



Are you planing a new project? Contact us now!

---

**Your personal contact:**

Daniel Dukic (certificated business economist)

Head of Sales of CAS-Group

Business Development & Projects

Tel.: +49 231-927 179-10

Email: d.dukic@cas-gruppe.de

**CONTRANS Logistik GmbH**

Freie-Vogel-Str. 367

D-44269 Dortmund

Tel.: +49 231 927 179-0

Fax: +49 231 927 179-20

Mail: info@cas-gruppe.de

**Contrans Logistics Antwerp BVBA**

Elisabethlaan 3

2600 Antwerpen, Belgien

Tel.: +32 3 361 17 46

Fax: +32 3 361 17 55

Mail: antwerp@cas-group.eu

**CONTRANS Logistik GmbH**

Obernstr. 56

D-28195 Bremen

Tel.: +49 421 449684-0

Fax: +49 421 449684-10

Mail: info@cas-gruppe.de

**CONPACK GmbH**

Josef-Baumann-Str. 21

D-44805 Bochum

Tel.: +49 234 687 399-21

Fax: +49 234 687 399-20

Mail: info@cas-gruppe.de

**Contrans Logistik GmbH**

88 Silom Road, 14<sup>th</sup> Floor, Paso Tower

TH-10500 Bangkok

Tel.: +66 92-5106501

Mail: a.starke@cas-group-th.com

**PIEPER Schwerlast GmbH**

Freie-Vogel-Str.367

D-44269 Dortmund

Tel.: +49 231 51 69 1-81

Fax: +49 231 51 69 1-82

Mail: info@pieper-schwerlast.de



Find us at:

